



Back in Muncie with IDEAS from Centreville, Maryland



Greg Torchio, Architect

Where the heck is
Centreville, Maryland ?

And what does it have to do
with Muncie?



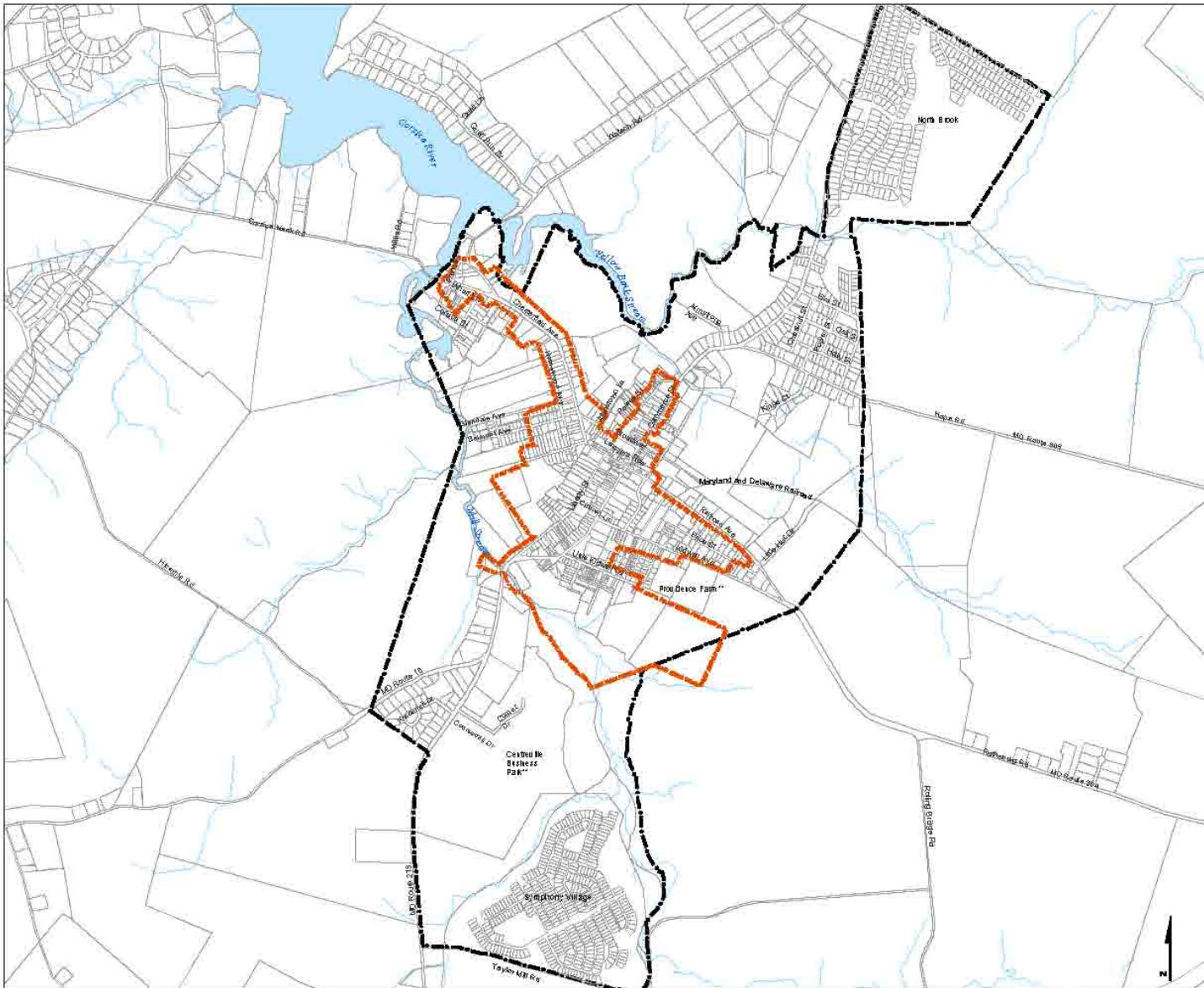


Centreville Community Plan

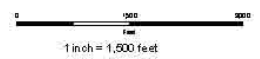
Figure 2 Town Base Map

Legend

-  Town Limits
-  Historic District
-  Parcels
-  Water
-  Streams



*Subdivision is currently building out. Map data is based on most current available information as of 12/12/2007. Maps will be updated as new information becomes available.



BASE MAP SOURCE: Green Acres Carting;
MSF Aerial View; Maryland Department
of Planning, 2005
Historic District-Maryland Historical Trust



File Name: K:\MS_Centreville\2007\GIS\Maping\final_mud\fig2_townboundary.mxd
March 2008









213

M. 44C
P. 706

M. 44C
P. 708

304

M. 44C
P. 743

M. 44C
P. 745
Lot 3

213

M. 44C
P. 705

M. 44C
P. 708

304

M. 44C
P. 743

M. 44C
P. 741

M. 44C
P. 745
Lot 2

M. 44C
P. 704

M. 44C
P. 724

M. 44C
P. 740

M. 44C
P. 740

M. 44C
P. 748

M. 44C
P. 703

M. 44C
P. 723

M. 44C
P. 725

M. 44C
P. 512

M. 44C
P. 702

M. 44C
P. 722
Lot 16

M. 44C
P. 513

M. 44C
P. 511

M. 44C
P. 701

HAPPY LADY LN

PENNSYLVANIA AVE

E WATER ST

304

M. 44C
P. 509

M. 44C
P. 714
Lot 1

M. 44C
P. 729

M. 44C
P. 739

M. 44C
P. 514

M. 44C
P. 515

RAILROAD AVE

M. 44C
P. 717

M. 44C
P. 730

TILGHMAN AVE

M. 44C
P. 515

M. 44C
P. 517

KIDWELL AVE

M. 44C
P. 732

TILGHMAN AVE

PRICE ST

M. 44C
P. 641

M. 44C
P. 542







Penn Station

Centreville, Maryland



Post Office #
Post Station

Post Office #
Post Station

SPEED
LIMIT
25



TORCHIO
ARCHITECTS



Informational sign on a post.









S. & W. R. R. Station,
Ganterville, Md.





CENTREVILLE


CHESTERTOWN
BANK

ATM
SERVICE

101
CENTREVILLE





LEASE

408-752-4545







TORCHIO BUILDING



TORCHIO BUILDING

2007

TORCHIO
ARCHITECTS
1000 BROADWAY
SUITE 200
NEW YORK, NY 10018
www.torchioarchitects.com





BATA LUMBER & SUPPLY INC.
410-781-8148









12.6.2007

















NO
STOPPING
ANY
TIME
←→





CENTREVILLE



N. LIBERTY

501









NO TIME

GROUND BREAKING ON OCT. 26, 2003

THE FUTURE HOME OF

CENTREVILLE ROTARY HOUSE

THE CENTREVILLE ROTARY HOUSE WILL PROVIDE TRANSITIONAL LONG-TERM HOUSING FOR VICTIMS OF DOMESTIC VIOLENCE AND ABUSE

A JOINT PROJECT OF THE FOLLOWING ORGANIZATIONS:

- CENTREVILLE ROTARY CLUB
- CENTREVILLE ROTARY CLUB COMMUNITY FUND, INC.
- MID-SHORE COUNCIL ON FAMILY VIOLENCE, INC.

CELEBRATING THE 100TH ANNIVERSARY OF ROTARY INTERNATIONAL
TO HELP SUPPORT THIS PROJECT, PLEASE CONTACT:
CHAS FURNESS, 410-756-1900

FOUNDATIONS SUPPORTERS OF THIS PROJECT INCLUDE THE FOLLOWING:

TORCHID ARCHITECTS
THE COMMISSIONERS OF QUEEN ANNE'S COUNTY
TOWN OF CENTREVILLE
GUNTHERS ELECTRIC, INC.

BUILDING BLOCK SUPPORTERS OF THIS PROJECT INCLUDE THE FOLLOWING:

ENGINEERING, INC. MAY FOUNDATION
REVILLE NATIONAL BANK





TYVEK

W. BIRCH

STOP

CHIMNEY

WINDOW

WINDOW

WINDOW

WINDOW

WINDOW

WOOD BOARD

BICYCLE

TRASH BINS

GRILL



NO
CUTTING
OR
TYPING

CELEBRATE
CENTREVILLE
HERITAGE HOUSE
CONSTRUCTION
IN THE PROGRESS OF
THE HERITAGE HOUSE FOR THE
CENTREVILLE HISTORIC DISTRICT
PROJECT
CONSTRUCTION OF THE HOUSE
WILL BE IN PROGRESS
FROM 8:00 AM TO 5:00 PM
DAILY FROM APRIL 15, 2011
TO APRIL 30, 2011
FOR MORE INFORMATION
CONTACT THE HISTORIC DISTRICT
COMMISSION AT 708-222-1111
OR VISIT US AT WWW.CENTREVILLE-
GA.GOV





228



M. 44C
P. 811

M. 44C
P. 812

213

M. 44C
P. 832

M. 44C
P. 855

M. 44C
P. 854

M. 44C
P. 852

M. 44C
P. 827

M. 44C
P. 820

M. 44C
P. 849
Lot 4

M. 44C
P. 823

213

JOHNSTOWN LN

N LIBERTY ST

ACADEMY LN

N COMMERCE ST

N COMMERCE ST

TURPINS I

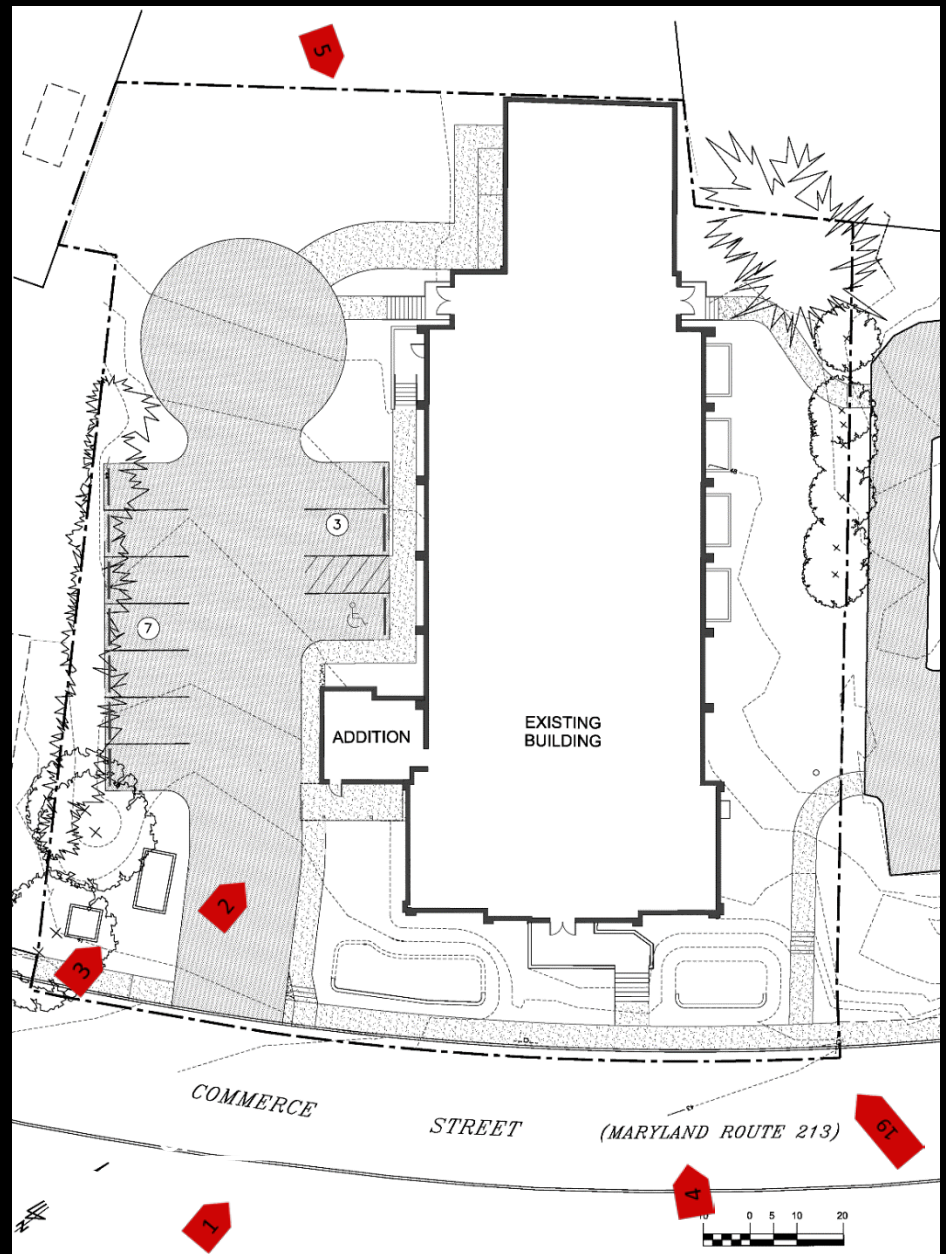


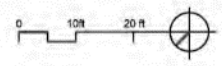
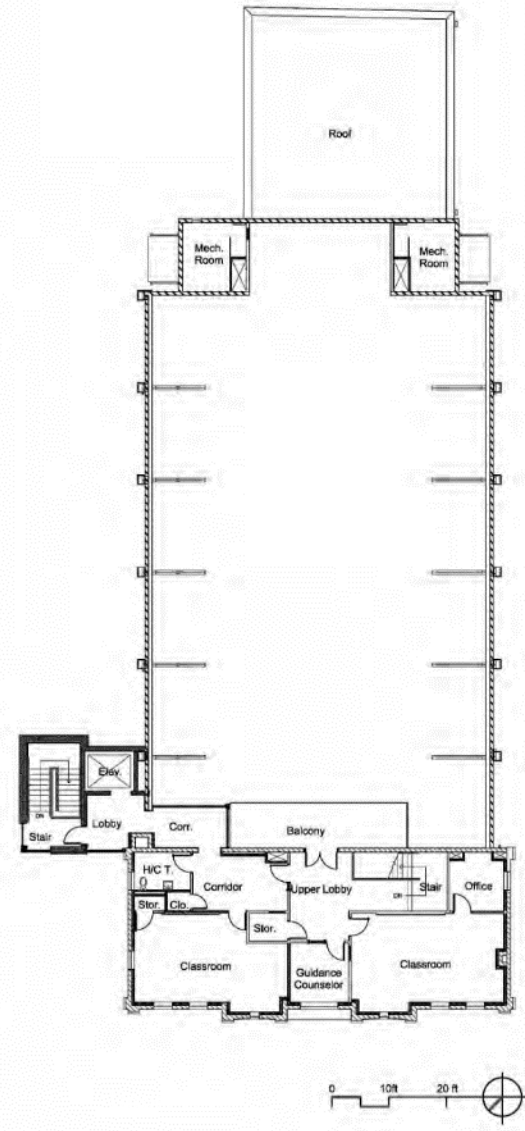
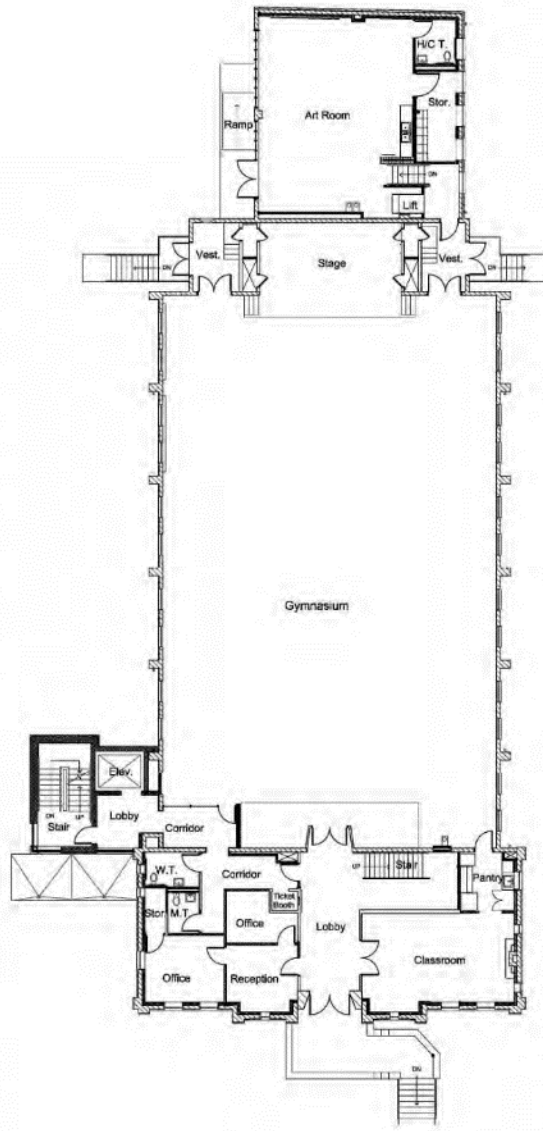
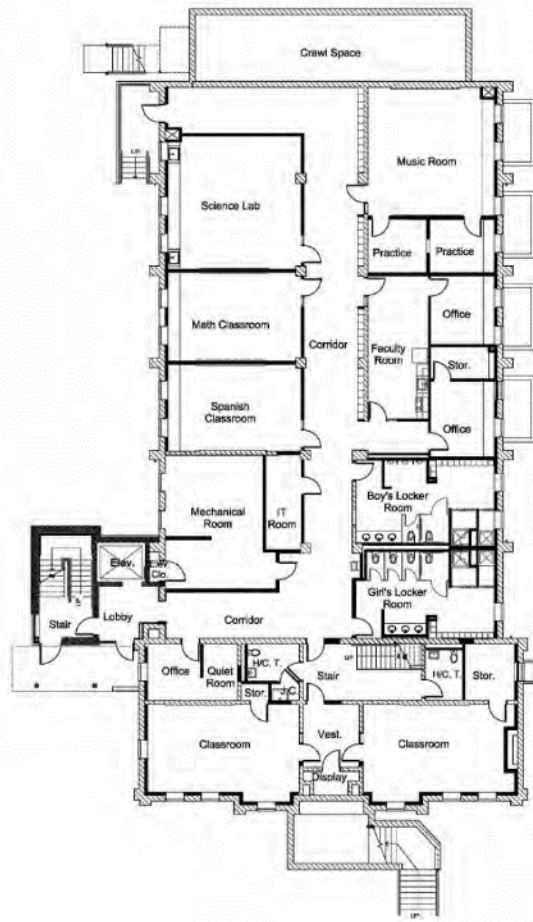


220









“BUILDING GREAT MINDS, SAVING GREAT SPACES”



1

Centreville Armory

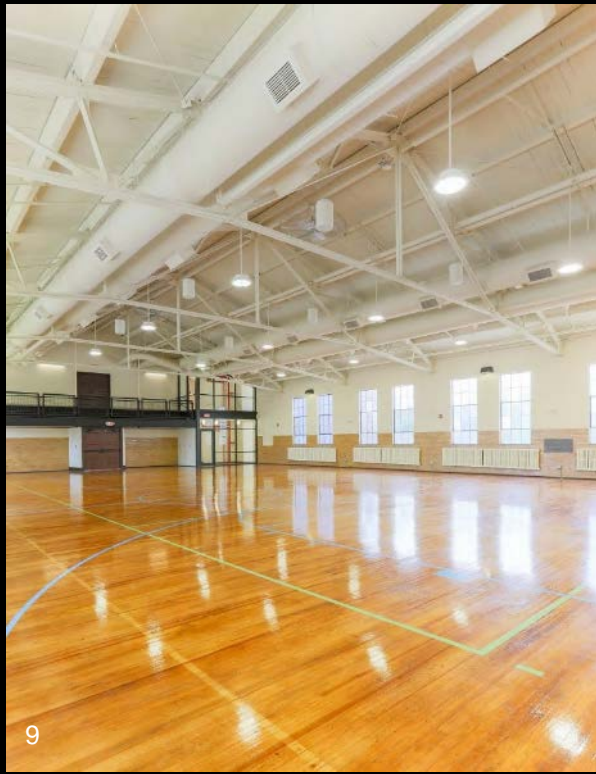


hord I coplan I macht













9
9

12



11 Corridor before

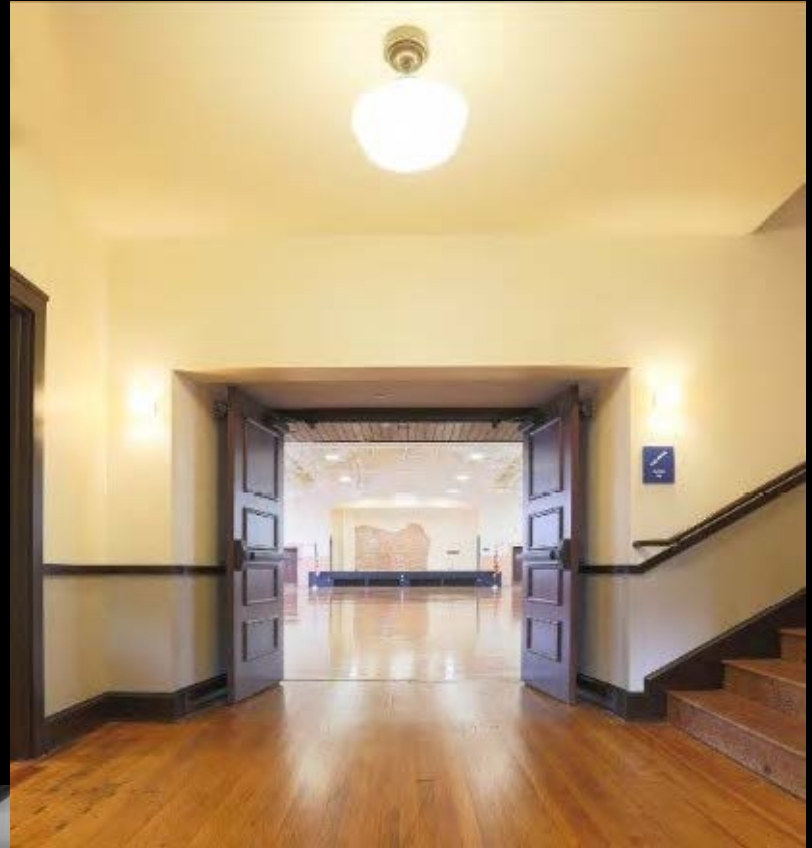


Shooting Range before



14

9



15



Original Entry Doors



8



Lower Level before



9

17



11

Lower Level before



9
C

18



11













Centreville Armory